

*November*  
**2020**

# **MONTHLY TOURIST ARRIVALS REPORT**

**SRI LANKA TOURISM DEVELOPMENT AUTHORITY**

[www.slttda.lk](http://www.slttda.lk)

Photo courtesy of SLTDA, SLRC Lovingly Sri Lanka programme



## SUMMARY

The total number of international tourist arrivals to Sri Lanka from January to March 2020 was 507,311. No tourist arrivals have been recorded since April due to the termination of all passenger flight & ship arrivals into Sri Lanka from 18th March. Total arrivals recorded from January to November 2019 was 1,672,039. In comparison to January to November last year (2019), a decline of 69.7% has been recorded for the same period in 2020.

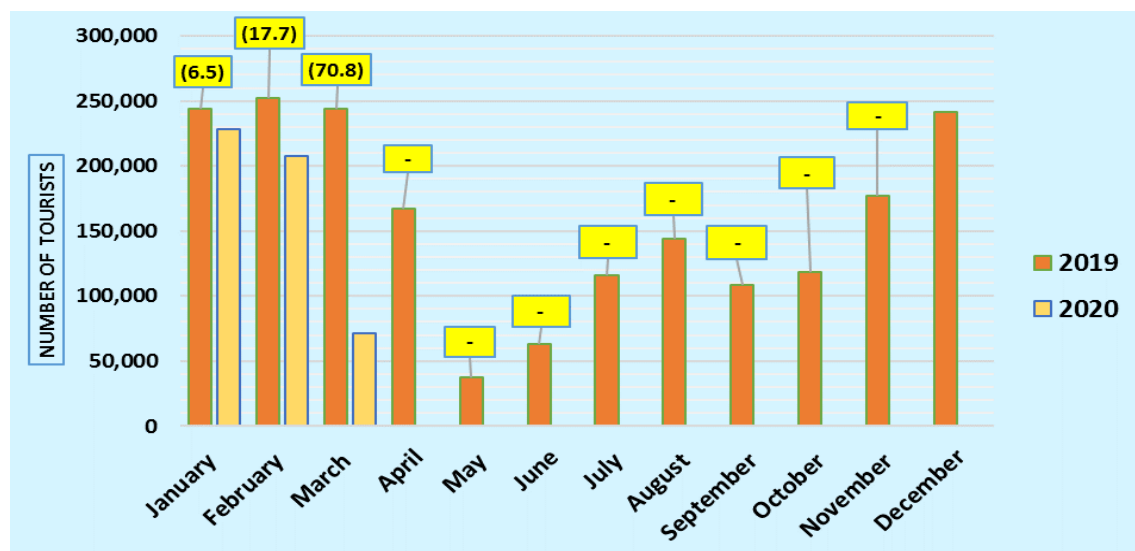
The largest source market recorded from January to November was India, followed by the United Kingdom and Russian Federation.

Almost 95 % of tourists travelled by air to Sri Lanka.

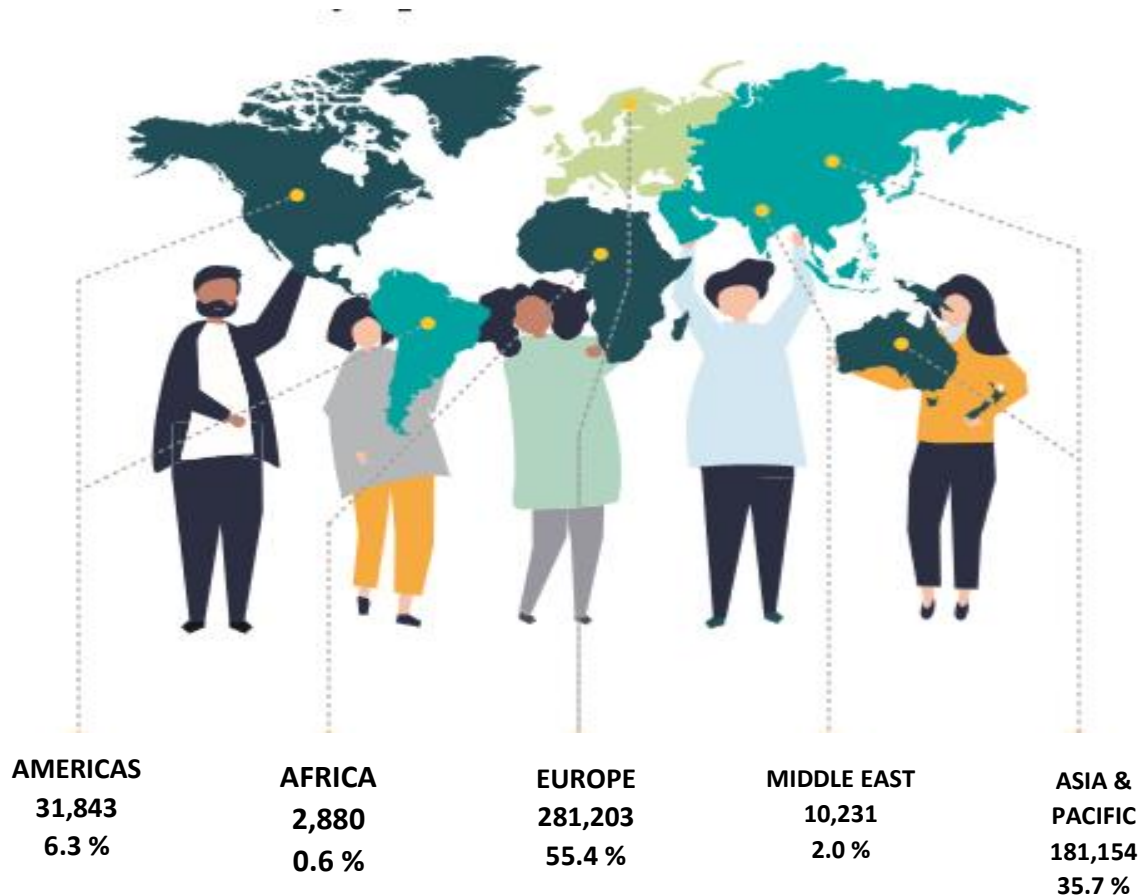
Month	2019	2020	% Change 2019/20
January	244,239	228,434	(6.5)
February	252,033	207,507	(17.7)
March	244,328	71,370	(70.8)
April	166,975	0	-
May	37,802	0	-
June	63,072	0	-
July	115,701	0	-
August	143,587	0	-
September	108,575	0	-
October	118,743	0	-
November	176,984	0	-
December	241,663		
Total (Up to November)	<b>1,672,039</b>	<b>507,311</b>	<b>(69.7)</b>
<b>Total</b>	<b>1,913,702</b>		



**Tourist Arrivals – November**  
**Zero (0)**  
 (Due to effect of the outbreak of COVID 19)



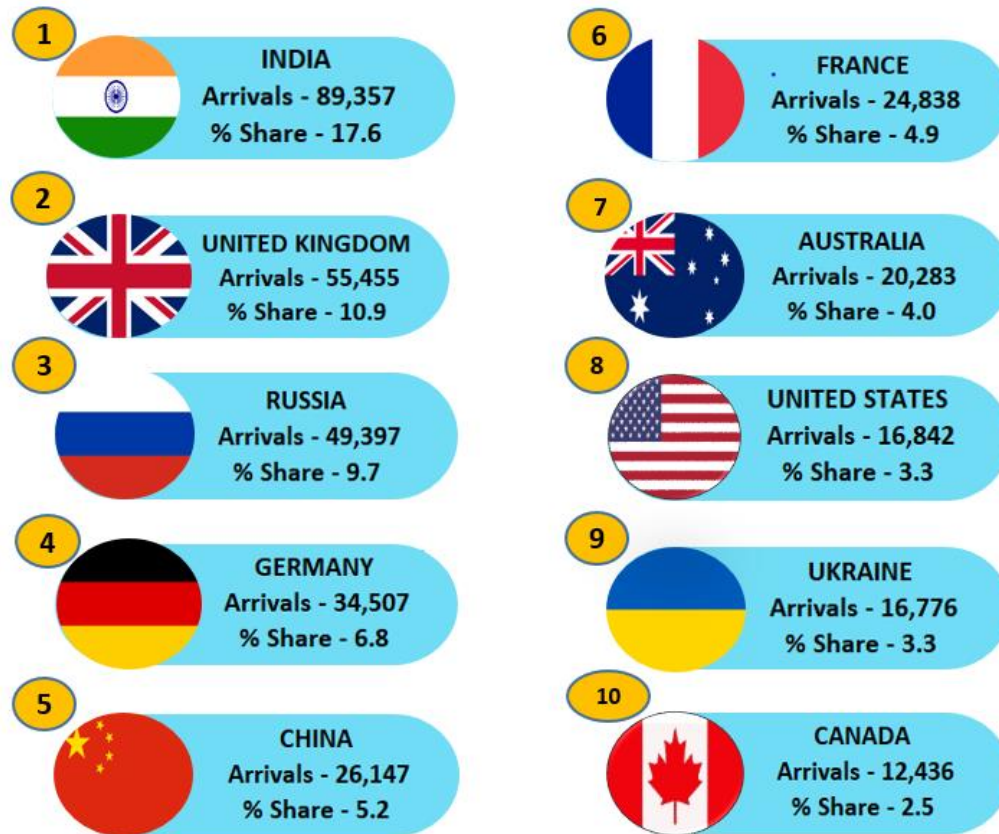
## TOURIST ARRIVALS BY REGION AND PERCENTAGE SHARE JANUARY ~ NOVEMBER 2020



Europe became the largest source of tourist traffic to Sri Lanka with 55.4 % of the total traffic received from January to November 2020. Asia and Pacific accounted for 35.7% of the total traffic, Americas 6.3 %, Middle East 2.0 % and Africa 0.6%. In comparison to January - November last year the highest decline of 75.8 % was recorded for Africa while Asia & Pacific recorded a decline of 75.3 %. Middle East recorded a decline of 74.5 % whereas Americas region recorded a decline of 70.1 %. A decline of 64 % was recorded from Europe. The effect of the outbreak of COVID 19 is clearly evident as all countries have recorded a decline in arrivals from mid of February. However, it is noteworthy that arrivals from Kazakhstan have recorded an increase of 37.2 % while the highest decline in arrivals (92.3%) have been recorded from Kenya.

## TOP TEN SOURCE MARKETS – JANUARY ~ NOVEMBER 2020

India, United Kingdom, Russia, Germany and China were Sri Lanka's top five international tourist generating markets in the period from January to November this year. India was the largest source of tourist traffic to Sri Lanka with 17.6 % of the total traffic received in above period. United Kingdom accounted for 10.9 % of the total traffic; while Russian Federation, Germany and China accounted for 9.7 %, 6.8 % and 5.2 % respectively. Comparing the top ten markets, the effect of the outbreak of COVID 19 is clearly evident as all countries have recorded a decline in arrivals. It is noteworthy that China has recorded the highest at (82.7 %).



Rank	Country of Residence	Tourist Arrivals from January to November 2020			Tourist Arrivals Jan to Nov 2019	% Change Jan to Nov 2020/2019
		By Air	By Sea	Total		
1	India	86,639	2,718	89,357	306,560	(70.9)
2	United Kingdom	49,015	6,440	55,455	177,792	(68.8)
3	Russian Federation	48,457	940	49,397	68,990	(28.4)
4	Germany	32,495	2,012	34,507	122,550	(71.8)
5	China	25,910	237	26,147	151,215	(82.7)
6	France	24,330	508	24,838	80,799	(69.3)
7	Australia	17,896	2,387	20,283	78,207	(74.1)
8	United States	14,349	2,493	16,842	56,530	(70.2)
9	Ukraine	16,043	733	16,776	28,988	(42.1)
10	Canada	11,122	1,314	12,436	42,217	(70.5)

## INTERNATIONAL TOURIST ARRIVALS BY COUNTRY OF RESIDENCE

	January ~ November 2020			Total Tourist Arrivals Jan to Nov 2019	% Change Jan to Nov (2020/19)
	Tourist Arrivals				
	By Air	By Sea	Total		
<b>AMERICAS</b>	<b>27,585</b>	<b>4,258</b>	<b>31,843</b>	<b>106,480</b>	<b>(70.1)</b>
<b>North America</b>	<b>25,723</b>	<b>3,904</b>	<b>29,627</b>	<b>100,018</b>	<b>(70.4)</b>
Canada	11,122	1,314	12,436	42,217	(70.5)
Mexico	252	97	349	1,271	(72.5)
United States	14,349	2,493	16,842	56,530	(70.2)
<b>Caribbean &amp; Central America</b>	<b>211</b>	<b>15</b>	<b>226</b>	<b>799</b>	<b>(71.7)</b>
Costa Rica	33	0	33	108	(69.4)
Jamaica	23	2	25	50	(50.0)
Others	155	13	168	641	(73.8)
<b>South America</b>	<b>1,651</b>	<b>339</b>	<b>1,990</b>	<b>5,663</b>	<b>(64.9)</b>
Argentina	352	64	416	1,211	(65.6)
Brazil	675	200	875	2,366	(63.0)
Chile	232	39	271	808	(66.5)
Colombia	190	11	201	603	(66.7)
Others	202	25	227	675	(66.4)
<b>AFRICA</b>	<b>2,510</b>	<b>370</b>	<b>2,880</b>	<b>11,903</b>	<b>(75.8)</b>
<b>North Africa</b>	<b>638</b>	<b>51</b>	<b>689</b>	<b>2,227</b>	<b>(69.1)</b>
Morocco	275	36	311	866	(64.1)
Sudan	137	6	143	527	(72.9)
Others	226	9	235	834	(71.8)
<b>Sub-Saharan Africa</b>	<b>1,872</b>	<b>319</b>	<b>2,191</b>	<b>9,676</b>	<b>(77.4)</b>
Kenya	106	4	110	1,427	(92.3)
Mauritius	132	38	170	453	(62.5)
Nigeria	25	0	25	156	(84.0)
South Africa	1,144	220	1,364	5,166	(73.6)
Others	465	57	522	2,474	(78.9)

	January ~ November 2020				
	Tourist Arrivals				
	By Air	By Sea	Total	Total Tourist Arrivals Jan to Nov 2019	% Change Jan to Nov (2020/19)
<b>ASIA &amp; PACIFIC</b>	<b>173,837</b>	<b>7,317</b>	<b>181,154</b>	<b>732,443</b>	<b>(75.3)</b>
<b>North East Asia</b>	<b>36,944</b>	<b>376</b>	<b>37,320</b>	<b>195,036</b>	<b>(80.9)</b>
China	25,910	237	26,147	151,215	(82.7)
Japan	6,613	31	6,644	26,349	(74.8)
South Korea	2,428	71	2,499	10,718	(76.7)
Taiwan	1,949	36	1,985	6,579	(69.8)
Others	44	1	45	175	(74.3)
<b>South East Asia</b>	<b>13,496</b>	<b>1,431</b>	<b>14,927</b>	<b>61,577</b>	<b>(75.8)</b>
Cambodia	372	0	372	2,775	(86.6)
Indonesia	948	166	1,114	4,376	(74.5)
Malaysia	3,433	61	3,494	14,884	(76.5)
Myanmar	473	59	532	2,839	(81.3)
Philippines	3,176	1,073	4,249	13,416	(68.3)
Singapore	2,506	39	2,545	11,990	(78.8)
Thailand	1,857	23	1,880	8,653	(78.3)
Vietnam	699	10	709	2,456	(71.1)
Others	32	0	32	188	(83.0)
<b>Oceania</b>	<b>20,122</b>	<b>2,584</b>	<b>22,706</b>	<b>89,036</b>	<b>(74.5)</b>
Australia	17,896	2,387	20,283	78,207	(74.1)
New Zealand	2,130	194	2,324	10,600	(78.1)
Others	96	3	99	229	(56.8)
<b>South Asia</b>	<b>103,275</b>	<b>2,926</b>	<b>106,201</b>	<b>386,794</b>	<b>(72.5)</b>
Afghanistan	146	0	146	435	(66.4)
Bangladesh	1,963	23	1,986	7,232	(72.5)
Bhutan	208	0	208	308	(32.5)
India	86,639	2,718	89,357	306,560	(70.9)
Iran	645	3	648	2,972	(78.2)
Maldives	9,404	3	9,407	51,245	(81.6)
Nepal	1,248	136	1,384	4,818	(71.3)
Pakistan	3,022	43	3,065	13,224	(76.8)

	January ~ November 2020				
	Tourist Arrivals				
	By Air	By Sea	Total	Total Tourist Arrivals Jan to Nov 2019	% Change Jan to Nov (2020/19)
<b>EUROPE</b>	<b>265,099</b>	<b>16,104</b>	<b>281,203</b>	<b>781,117</b>	<b>(64.0)</b>
<b>Northern Eur.</b>	<b>68,008</b>	<b>7,138</b>	<b>75,146</b>	<b>236,301</b>	<b>(68.2)</b>
Denmark	4,769	136	4,905	15,424	(68.2)
Finland	2,216	82	2,298	5,884	(60.9)
Norway	2,954	65	3,019	12,059	(75.0)
Sweden	6,899	162	7,061	17,558	(59.8)
United Kingdom	49,015	6,440	55,455	177,792	(68.8)
Others	2,155	253	2,408	7,584	(68.2)
<b>Western Eur.</b>	<b>79,156</b>	<b>3,073</b>	<b>82,229</b>	<b>294,096</b>	<b>(72.0)</b>
Austria	4,188	112	4,300	12,889	(66.6)
Belgium	3,274	97	3,371	13,632	(75.3)
France	24,330	508	24,838	80,799	(69.3)
Germany	32,495	2,012	34,507	122,550	(71.8)
Netherlands	8,492	164	8,656	36,135	(76.0)
Switzerland	6,217	172	6,389	27,260	(76.6)
Others	160	8	168	831	(79.8)
<b>Central / Eastern Europe</b>	<b>97,718</b>	<b>2,655</b>	<b>100,373</b>	<b>161,666</b>	<b>(37.9)</b>
Belarus	2,606	32	2,638	4,134	(36.2)
Czech Republic	7,580	19	7,599	16,770	(54.7)
Estonia	1,177	8	1,185	1,903	(37.7)
Hungary	1,493	95	1,588	3,492	(54.5)
Kazakhstan	2,267	66	2,333	1,701	37.2
Lithuania	1,037	17	1,054	2,408	(56.2)
Poland	11,481	427	11,908	17,535	(32.1)
Romania	1,574	150	1,724	4,526	(61.9)
Russian Federation	48,457	940	49,397	68,990	(28.4)
Slovakia	1,488	25	1,513	4,367	(65.4)
Ukraine	16,043	733	16,776	28,988	(42.1)
Others	2,515	143	2,658	6,852	(61.2)

	January ~ November 2020				
	Tourist Arrivals				
	By Air	By Sea	Total	Total Tourist Arrivals Jan to Nov 2019	% Change Jan to Nov (2020/19)
<b>Southern / Mediterranean Europe</b>	<b>20,217</b>	<b>3,238</b>	<b>23,455</b>	<b>89,054</b>	<b>(73.7)</b>
Greece	1,092	481	1,573	6,059	(74.0)
Italy	7,135	1,468	8,603	31,186	(72.4)
Portugal	1,377	225	1,602	4,538	(64.7)
Spain	3,255	130	3,385	22,467	(84.9)
Turkey	1,517	604	2,121	3,934	(46.1)
Israel	3,422	134	3,556	13,288	(73.2)
Others	2,419	196	2,615	7,582	(65.5)
<b>MIDDLE EAST</b>	<b>10,139</b>	<b>92</b>	<b>10,231</b>	<b>40,096</b>	<b>(74.5)</b>
Bahrain	543	6	549	2,028	(72.9)
Egypt	922	34	956	3,223	(70.3)
Iraq	137	1	138	764	(81.9)
Jordan	621	6	627	2,568	(75.6)
Kuwait	822	3	825	2,908	(71.6)
Lebanon	480	3	483	3,825	(87.4)
Oman	1,041	4	1,045	3,799	(72.5)
Qatar	128	1	129	920	(86.0)
Saudi Arabia	4,745	10	4,755	14,811	(67.9)
United Arab Emirates	350	2	352	3,159	(88.9)
Others	350	22	372	2,091	(82.2)
<b>TOTAL</b>	<b>479,170</b>	<b>28,141</b>	<b>507,311</b>	<b>1,672,039</b>	<b>(69.7)</b>

\* All visitor arrival statistics in this report are from the Department of Immigration & Emigration.

**Sri Lanka suspends tourist arrivals from all countries from 18th March 2020 due to COVID-19**